

FLOENVIR – Streets Tutorial

Graphical Editing of the Street Parameters

Objective: Create and edit the STREET.DAT file. Note: Editing streets can also be done more effectively in the GDS with aerial photos.

Data Required: FLO-2D grid system must be established.

Steps:

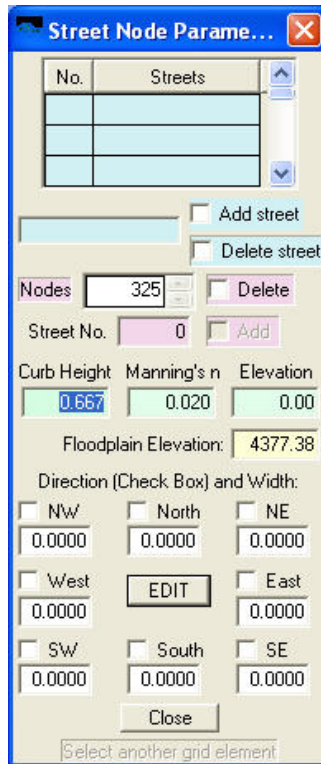
We will use the BARN example data files that are located in the folder C:\PROGRAM FILES\FLO-2D\Example Projects\Barn.

1. Open the GUI, click on the CONT.DAT rectangular button and click “OK” for the CONT.DAT file located in the above folder. If you want to start from scratch making the streets, go to Explorer and rename STREETS.DAT to STREET1.DAT, then click the STREET switch ‘off’ (the radio button in the GUI CONT.DAT form).
2. Starting from scratch. Click on the Pre-Processor pull down menu and click on ‘FLOENVIR’.
3. On the menu bar, click on ‘Streets’ and blank grid system will be displayed.
4. To edit the global street parameters, click on ‘Edit General Parameters’ to display the following dialog box:

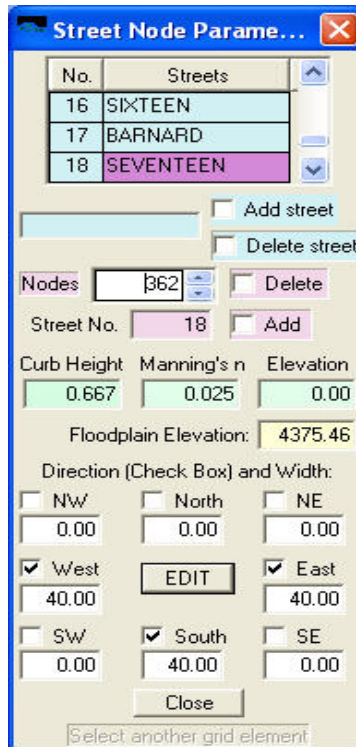


You can edit the variables by simply typing in the new data. Click ‘OK’ to close the dialog box.

5. Return to the blank grid system and click on ‘Zoom’ on the menu bar. Hold the left mouse button down to draw a square around the desired area of enlargement.
6. Use either the Pick or Mouse Icon on the toolbar to select a grid element(s) for editing. After the selection a editor dialog box appears:



7. Next, type in a street name and check the 'Add street' box. Check the boxes where you want to assign the street segments and add a street width in the text below it. The street segments will emanate from the center. You can also edit the curbheight, street Manning's n-value or the street elevation. Click 'Edit' to continue with another grid element.
8. On the second street element, you can either add to Street No. 1 or you can create a new street by assigning a name and checking 'Add street'. If you add a street segment to Street No. 1, check the 'Add' box next to the Street No. 1 text box.
9. If you starting with the existing BARN street system, you will see a green street pattern when you open the Street menu. Again 'Zoom-in' on a location on the grid system and select either the 'Pick' or 'Mouse' Icon to beginning editing.
10. If you select a grid element that already contains street segments, it will display the data in the dialog box as shown below:



11. You can edit by deleting or unchecking the street direction check boxes. You may also edit the grid element street data in the green text boxes.
12. If you click on a grid element that does not contain any street segments, then you have a choice to either add the street segment to an existing street or create a new street. If you add the grid element to an existing street it will be necessary to enter the Street No. and check the 'Add' check box as well as enter the street width data and direction. In the figure below, grid element 391 has a new street segment. Remember to save your data.

