

Installing and Using *Mapper.NET*

Mapper.NET_2007 will greatly enhance creating flood hazard and flood contour maps. It is integrated with ArcGIS Engine and has many unique mapping features and tools including breaklines to control contour generation (see the attached list of new *Mapper.NET* features).

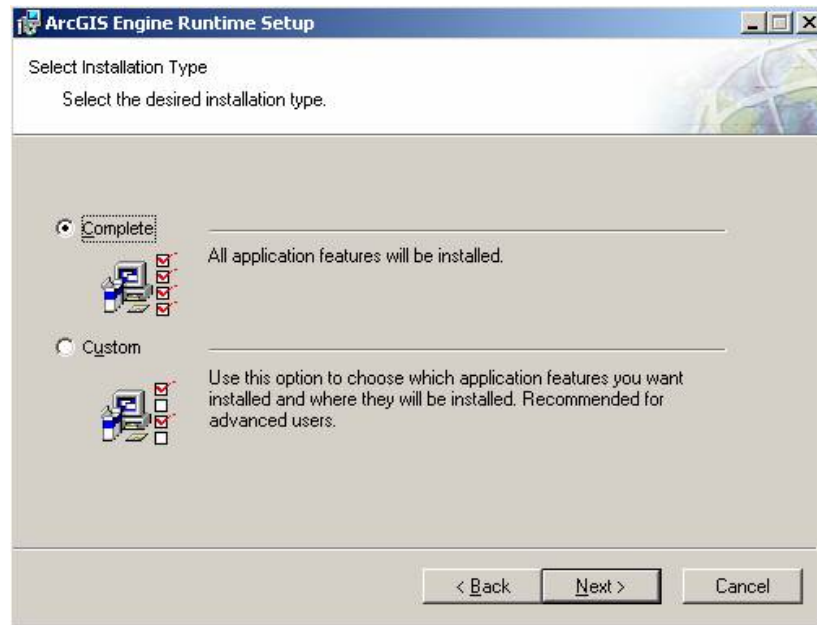
Mapper.NET installation requires having a license for both ArcGIS® desktop and ArcGIS® 3D Analyst and ArcGIS Engine Runtime 9.2 must be installed in the user's machine. The ArcGIS Engine Runtime 9.2 installation setup DVD must be obtained from ESRI. You may purchase the ArcGIS Runtime Engine 9.2 license and key codes from ESRI. ESRI will provide an authorization file *.ecp or a registration number. To install the ArcGIS Engine Runtime 9.2, the following is required:

- Prerequisites: The .NET Framework 2.0 must be installed in the user's machine. To confirm that it is installed: Click Start, Control Panel, and open the Add/Remove programs dialog box. See if the .NET Framework 2.0 is listed in the programs list.
- If the .NET Framework 2.0 is not installed, the user can download a distributable package from Microsoft:
<http://www.microsoft.com/downloads/details.aspx?FamilyID=0856EACB-4362-4B0D-8EDD-AAB15C5E04F5&displaylang=en>
- ArcGIS Engine Runtime 9.2 can't be installed in machines with ArcGIS 8.x, 9.0, or 9.1

If it is necessary to install ArcGIS Engine Runtime 9.2 on your computer, complete the following steps:

1. Confirm that any currently installed ArcGIS products are the same version as the Engine Runtime 9.2 setup to be installed. To check if any of these products are installed on the computer and verify the version number, do the following:
 - ✓ Click Start, Control Panel, and open the Add/Remove Programs dialog box.
 - ✓ If ArcGIS Engine Runtime is listed in the programs list, it is installed on the machine. Confirm that ArcGIS Engine Runtime is version 9.2. Click the support information link to determine the product version number.
 - ✓ If no ArcGIS products are shown in the programs list, proceed to Step 2. If ArcGIS products are shown in the programs list, click the support information link to view the version of the product. These products include ArcIMS, ArcGIS Desktop, ArcGIS Workstation, ArcReader, ArcGIS Server, .NET Application Developer Framework (ADF), and Java ADF.
 - ✓ If the versions displayed are 9.2, proceed to Step 2. If the versions displayed are not the same, the products need to be removed before installing ArcGIS Engine Runtime. Do not proceed to Step 2 until these products have been uninstalled. As an alternative the ArcGIS Engine Runtime 9.2 (and *Mapper.NET.exe*) could be installed in another partition of the machine.

2. Launch the ArcGIS Engine Runtime 9.2 setup program by navigating to ESRI DVD then double-clicking the setup.exe file.
3. In the installation click “Next” if all Windows applications are closed.
4. Review and accept the license agreement and click “Next” to proceed with the installation.
5. Choose the Complete option to install all ArcGIS Engine Runtime 9.2 installation features. Click “Next” to continue. See the following screen shot:



6. Follow any further instructions of the ArcGIS Engine Runtime 9.2 installation program until it indicates that the installation is complete.
7. After installation, the ArcGIS Engine Runtime must be authorized. The authorization file or a registration number has to be obtained from ESRI. The authorization creates or updates a file named “keycodes” in C:\Program Files\ESRI\License\sysgen. Once the authorization file or a registration number is obtained, run the “Software Authorization Wizard” that was installed with the ArcGIS Runtime program. It is in Start/All Programs/ArcGIS/Software Authorization folder. Follow the option instructions.
8. Click on the Mapper_NET_2007.exe file to run the Mapper_NET program. You can make a short cut on your desktop to facilitate access to the program.